

All day BREAKFAST

FOLDED EGG AND CHEESE	4.5
Folded or fried egg*, American cheese, "cracked sauce", and pepper jam. Add bacon, pork or chicken sausage +2 Add chicken tender +3	
SUPER MINIS	8
Housemade rolls, crispy chicken tenders, and honey butter.	
BREAKFAST BURRITO	12
Flour tortilla, hashbrowns, folded eggs, cheese sauce, grilled jalapeños, and green sauce. Add bacon, pork or chicken sausage +2 Add chicken tender +3	
HERO BREAKFAST PLATE	12
Two folded or fried eggs*, hashbrowns or fruit, toast with seasonal jam and choice of bacon, pork or chicken sausage. Add chicken tender +3	
HERO POWER PLATE	12
Two folded or fried eggs*, grilled chicken, avocado, tomato, vinaigrette, and dill. <i>GF.</i>	
LOADED HASHBROWNS	9.5
House-made, crispy potato cakes, fried egg*, onions, jalapeños, cheese sauce, "cracked sauce", and pepper jam. Add bacon, pork or chicken sausage +2 Add chicken tender +3	
GRANOLA AND YOGURT	8
Greek yogurt, housemade granola, seasonal fruit, and jam. <i>GF. Contains Peanuts.</i>	
CHICKEN N WAFFLES	13
Fried chicken tenders over waffles. Sprinkled with powdered sugar and topped with honey butter.	
WAFFLE PLATE	10
Two delicious leige style waffles, served with berries, honey butter, and syrup. Sub or add chocolate pearls or whipped cream +1	

Lunch

Lunch sandwiches come with your choice of a classic side.
Sub a premium side for +1.50

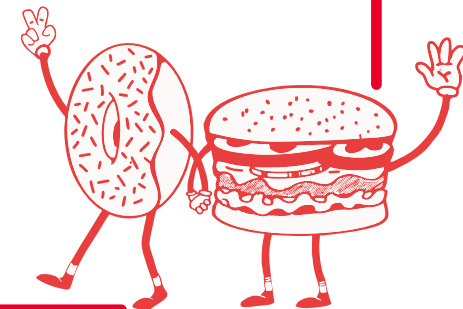
ORIGINAL HERO CHEESEBURGER	9
American cheese, onions, pickles, and "cracked sauce". Make it a double +3	
CLASSIC BURGER	9
American cheese, lettuce, onions, pickles, tomatoes, and burger sauce. Make it a double +3	
PATTY MELT	11
Two beef patties, caramelized onions, American cheese, mayonnaise, on griddled bread.	
HERO CHEESESTEAK	13
Shaved beef, bell peppers, caramelized onions, cheese sauce, on a brioche bun.	
BLT	11
Bacon, lettuce, tomato, mayonnaise, on toast.	
CHEDDAR CRUSTED GRILLED CHEESE	10
Milty American cheese interior, on cheddar coated griddled bread.	
SUPER CRUNCH SANDWICH	12
Springer Mountain Fried Chicken, pickles, "cracked sauce", and pepper jam.	
BUFFALO CRUNCH SANDWICH	12
Springer Mountain Fried Chicken, buffalo sauce, ranch, and lettuce.	
CHICKEN TENDER SANDWICH	12
Fried or grilled chicken tenders, lettuce, tomato, honey mustard, on toast. Make it a club with cheese and bacon +2.50	
CRACKED CHICKEN WRAP	12
Your choice of grilled or fried chicken tenders, bacon, cheddar, pickles, lettuce, and "cracked sauce".	
CHICKEN TENDER PLATE	12
Three fried or grilled chicken tenders with your choice of side and sauce.	
CHICKEN SALAD	11
Make it a salad, wrap, or sandwich.	
HERO SALAD	12
Mixed greens, avocado, bacon, shredded cheddar, cucumbers, tomatoes, radish, dill, sesame seeds, choice of ranch or vinaigrette. Add grilled or fried chicken tenders +3	



Menu

1008 DUNNAVANT VALLEY RD
BIRMINGHAM , ALABAMA 35242

EATATHERO.COM
(205) 564 1583



DOUGHNUTS *Made daily*

Our bakers make doughnuts fresh every morning, check out the case to see what they made today!

GOATS

OG VANILLA . SPRINKLE . CHOCOLATE . STRAWBERRY

\$2.50

HERO FAVS

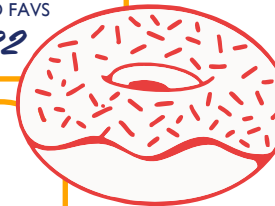
PRICES VARY

\$3.25 - \$4.50

SIDEKICKS & DOZENS

SIDEKICKS . CLASSIC OG . GOATS . HERO FAVS

\$4.50 . \$20 . \$24 . \$32



DRINKS

FOUNTAIN DRINKS	3.5
ICED TEA	3.5
MILK	2.5
DAVE'S SOFT LEMONADE	4
BEER	4
MIMOSAS	10
MIMOSA PARTY	32

SIDES

CLASSIC SIDE

CRINKLE CUT FRIES	3
TOMATO & CUCUMBER	3
MIXED FRUIT	3
ZAPP'S CHIPS	2
HASHBROWNS	3
GRITS	3

PREMIUM SIDE

CHEESY HASHBROWNS	4.5
CHEESY RANCH FRIES	4.5
SIDE SALAD	4.5
LEIGE WAFFLE	4.5

Specialty COFFEES

ESPRESSO	3
AMERICANO	3.25 / 4.25
DRIP	3.25 / 4.25
CAPPUCCINO	3.75
LATTE	5 / 6
MOCHA LATTE	6 / 7
VANILLA LATTE	6 / 7
CARAMEL LATTE	6 / 7
CHAI LATTE	6 / 7
EXTRA SHOT	1.25
COLD BREW	4.25
HOT COCOA	3

fresh squeezed **OJ** \$5

Fronut \$4

BRIOCHE DOUGHNUT
FILLED WITH SOFT SERVE



SHAKES

VANILLA SHAKE	6
CHOCOLATE SHAKE	6
STRAWBERRY SHAKE	6
BANANA PUDDING SHAKE	6
COOKIES & CREAM SHAKE	6
HEROCCINO SHAKE	6

Kids

HERO BURGER	7
TENDERS	9
GRILLED CHEESE	5
LIL BREAKFAST	7
<small>one egg, choice of bacon, pork or chicken sausage, fruit, and hashbrown</small>	
PEANUT BUTTER & JELLY	5
<small>contains peanuts</small>	
WAFFLE PLATE	7
<small>one waffle topped with honey butter, choice of protein on the side, and side of syrup</small>	

Soft Serve \$4

CHOCOLATE, VANILLA, OR SWIRL
get it dipped
CHERRY, BUTTERSCOTCH, CHOCOLATE